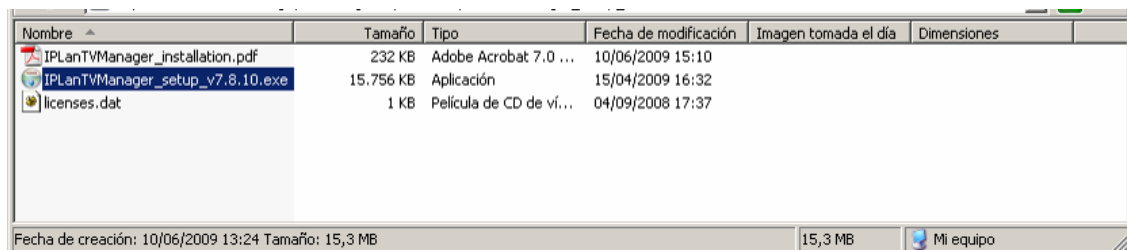


- IPLanTVManager Installation user's guide -

To run IPLanTVManager it is recommended the following minimum hardware features:

- Pentium 4 (2GHz) and 512 MB RAM
- Ethernet Interface
- 200 MB free on Hard Disk
- OS installed: Windows 2K / XP (Service pack 2 or higher) / Vista

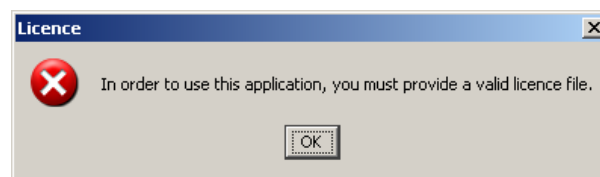
1.- Unzip file and run “IPLanTVManager_setup_vx.x.x.exe” for installing application:



2.- After installing, run application IPLanTVManager at PC desktop.



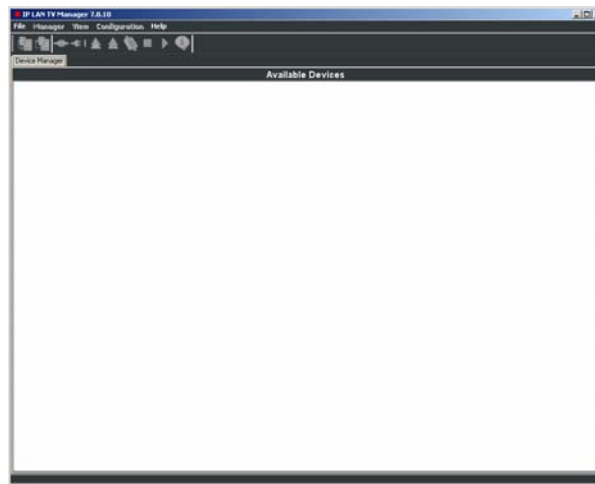
The first time the application is run, you will see the window alert:





IP LAN TV MANAGER

Version 7.8.10



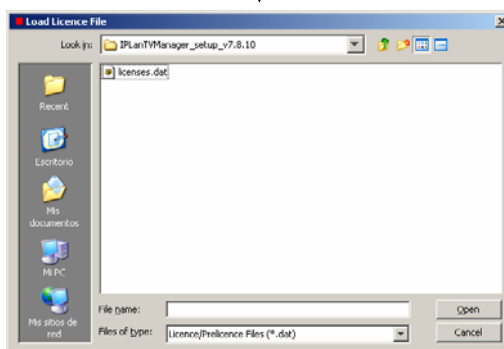
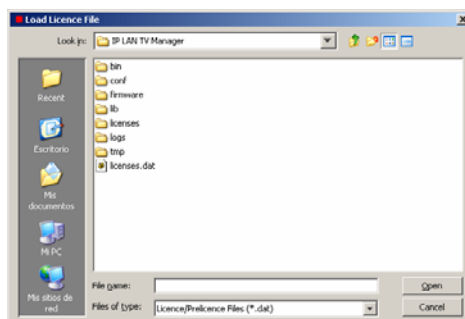
HP Linux IT Manager 3.8.10

File Manager View Configuration Help

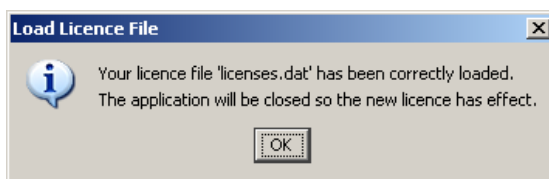
Project Overview...
Log File Manager...
Add Profiles to File
Load Existing File
Save Existing File
Save as New File
Exit

Available Devices

5.- By default, program will select a null file (pre-licence) included with the installation, but you must select the licence file included in .zip downloaded:



6.- After selecting new licence, new alert will be shown on screen and application will be closed when press OK.



7.- IPLanTVManager is ready for being used.